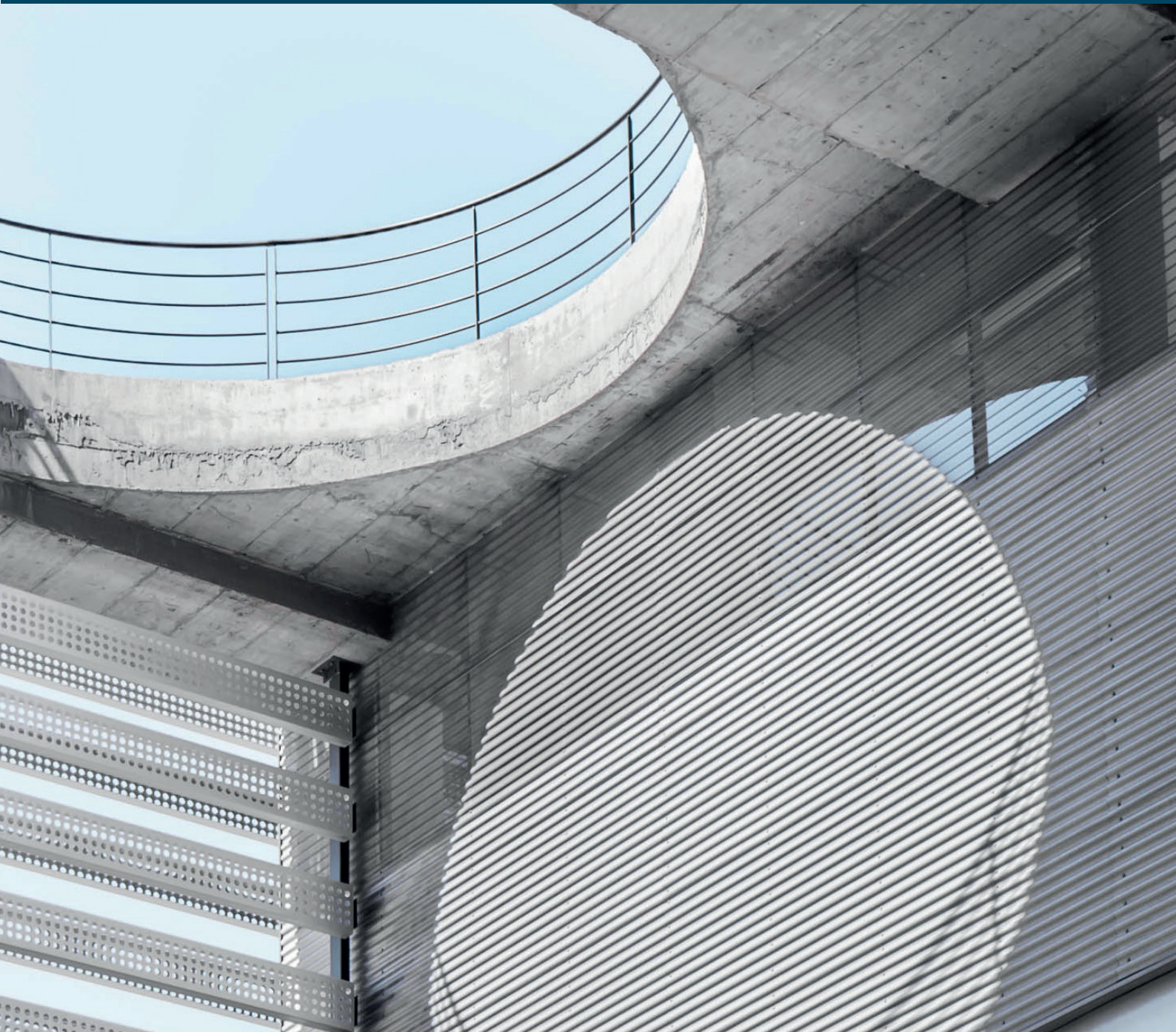




# Engineering

Specialist Insurance



## Why choose

### Bryte?

This diverse profession needs a detailed understanding of the specific type of engineering activities and services that require insurance. At Bryte, we have a wealth of experience in identifying, managing and controlling engineering risks.

Our specialist expertise in this sector allows us to cover risks in manufacturing, distribution and construction including:

- Machinery risks
- Computer and electronic risks
- Construction plant and machinery risks
- Contract works (construction and erection)
- Associated public liability risks

---

In addition, we offer bespoke insurance solutions and continually shape and develop our offering to enhance the scope of risk coverage, thus positioning us to add more market solutions in the future.

**Our comprehensive engineering solution incorporates key industry standards – because we recognise that this is a complex and diverse area of specialisation, one that requires an insurer who understands the full extent of potential risk. Bryte provides a team of engineers, risk managers and surveyors who focus on analysing a company’s needs and who provide our customers with extensive and personalised risk profiles:**

<b>Machinery Breakdown (including Loss of Profits)</b>	<ul style="list-style-type: none"> <li>• Cover for sudden and unforeseen physical damage to plant and machinery whether it is: <ul style="list-style-type: none"> <li>– Resting or at work</li> <li>– Being dismantled or in subsequent re-erection</li> <li>– Repositioned or removed</li> <li>– Cleaned</li> <li>– Inspected</li> <li>– Overhauled</li> </ul> </li> <li>• Cover may be extended to protect customers against loss in respect of business interruption following an indemnifiable event under the Machinery Breakdown insurance</li> </ul>
<b>Deterioration of Stock (following Machinery Breakdown)</b>	<p>Cover protects customers against loss or damage by deterioration or contamination of goods during storage (kept within a controlled environment) as a result of an indemnifiable event under the Machinery Breakdown insurance</p>
<b>Computer/ Electronic Data Processing Equipment</b>	<p>Cover provided to protect equipment which is either owned or leased against a wide range of perils whether the equipment is on the premises, in transit or even temporarily located at other premises</p>
<b>Medical Practice Equipment</b>	<p>Cover against accidental physical loss or damage to medical equipment</p>
<b>Contractors Plant and Machinery (Plant All Risks)</b>	<ul style="list-style-type: none"> <li>• Cover provided for accidental physical damage to plant</li> <li>• Cover may be extended to include loss or damage to hired plants</li> <li>• Ongoing hire charges, including liability to third parties following loss or damage for which the customer may be responsible, can also be incorporated into our cover</li> </ul> <p>We have deleted the condition of average clause from the policy which is a huge saving to the customer</p>
<b>Contractors All Risks</b>	<p>Cover protects the employer and contractor (as well as other insured's as required by contract or agreement) against risks associated with construction, including legal liability to compensate for death/injury and loss or damage to third parties</p>
<b>Works Damage</b>	<ul style="list-style-type: none"> <li>• Cover protects customers against accidental or physical loss or damage to property</li> <li>• Cover may include insurance for plant and machinery belonging to the customer, as well as for property being manufactured or worked on</li> </ul>
<b>Transit and Erection</b>	<p>This cover is necessary for loss or damage to plant and machinery during operations such as:</p> <ul style="list-style-type: none"> <li>• Dismantling or erection</li> <li>• Position or resiting</li> <li>• Storage or transit</li> <li>• Maintenance or repair</li> <li>• Demonstration or exhibition</li> <li>• Liability for third parties</li> </ul>





## Contact

### Registered Address

Rosebank Towers, Fifth Floor,  
15 Biermann Avenue,  
Rosebank, 2196

T 011 088 7000  
[www.brytesa.com](http://www.brytesa.com)

### **Bryte Insurance Company Limited**

A Fairfax Company

Registration No. 1965/006764/06 | Licensed insurer and authorised FSP (17703)